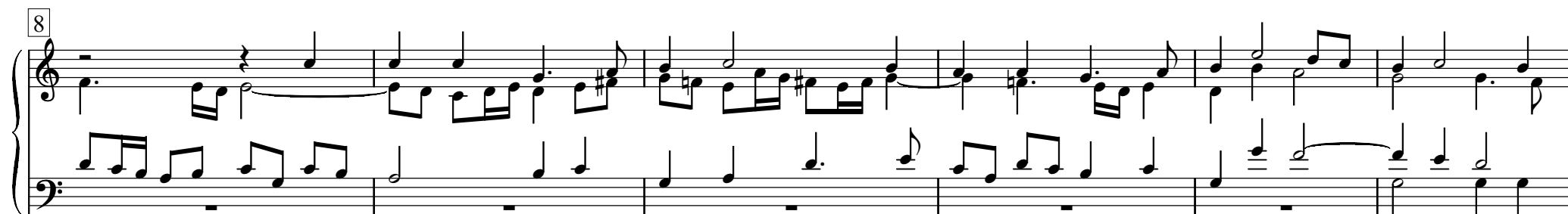
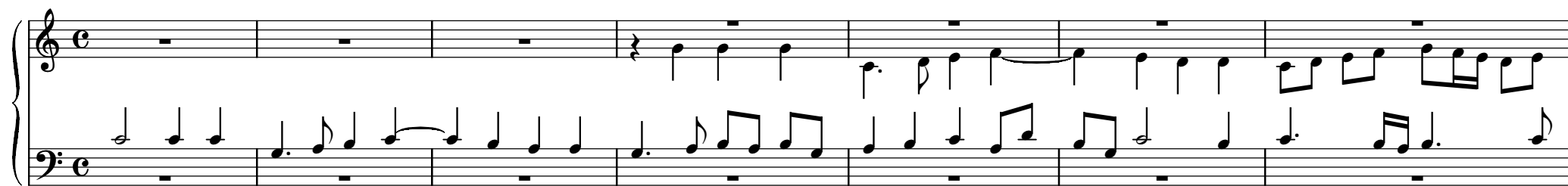


Choralvorspiel: Ein feste Burg ist unser Gott

Johann Pachelbel



20

This system contains measures 20 through 25. The right hand features a melodic line with eighth and sixteenth notes, including a triplet in measure 21 and a half-note triplet in measure 24. The left hand provides a bass line with eighth and sixteenth notes, featuring a triplet in measure 21. The system concludes with a key signature change to one sharp (F#) in measure 25.

26

This system contains measures 26 through 32. The right hand continues the melodic development with various note values and rests. The left hand has a more active bass line with eighth and sixteenth notes. The system ends with a key signature change to two sharps (F# and C#) in measure 32.

33

This system contains measures 33 through 39. The right hand features a melodic line with eighth and sixteenth notes, including a half-note triplet in measure 34. The left hand has a bass line with eighth and sixteenth notes. The system concludes with a key signature change to one sharp (F#) in measure 39.

40

This system contains measures 40 through 45. The right hand features a melodic line with eighth and sixteenth notes, including a half-note triplet in measure 41. The left hand has a bass line with eighth and sixteenth notes. The system concludes with a key signature change to one sharp (F#) in measure 45.