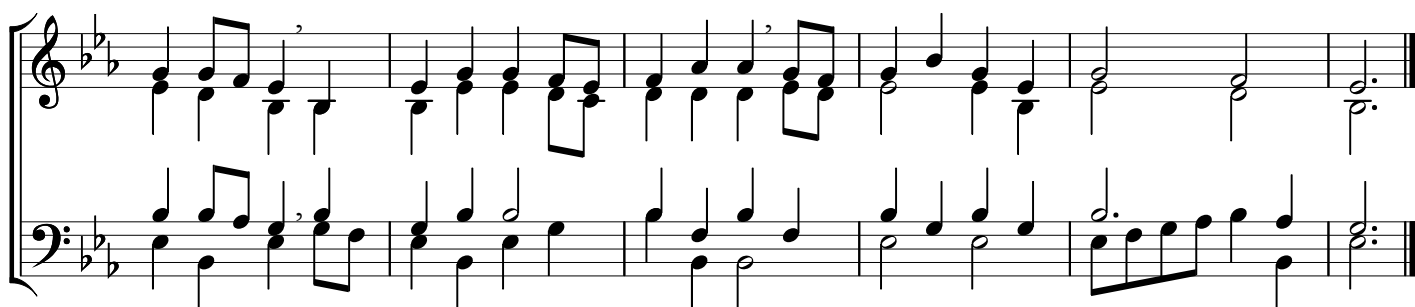
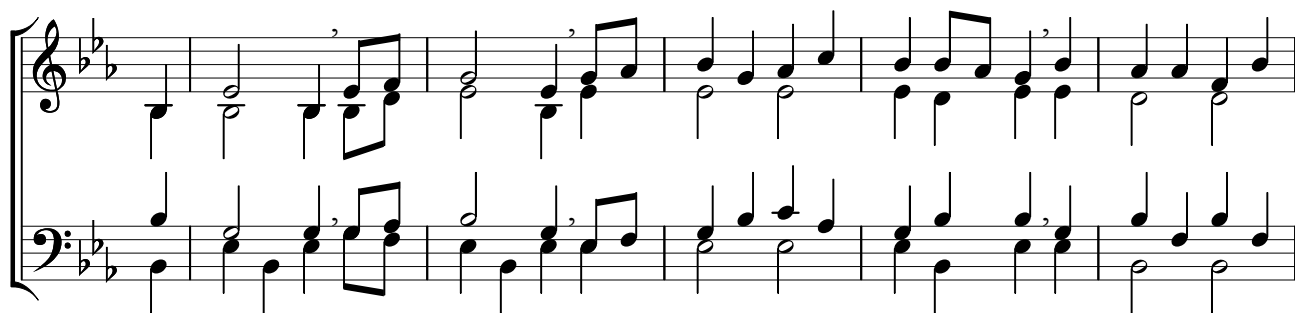


# Sankt Martin

Satz: Wilfried Rittau

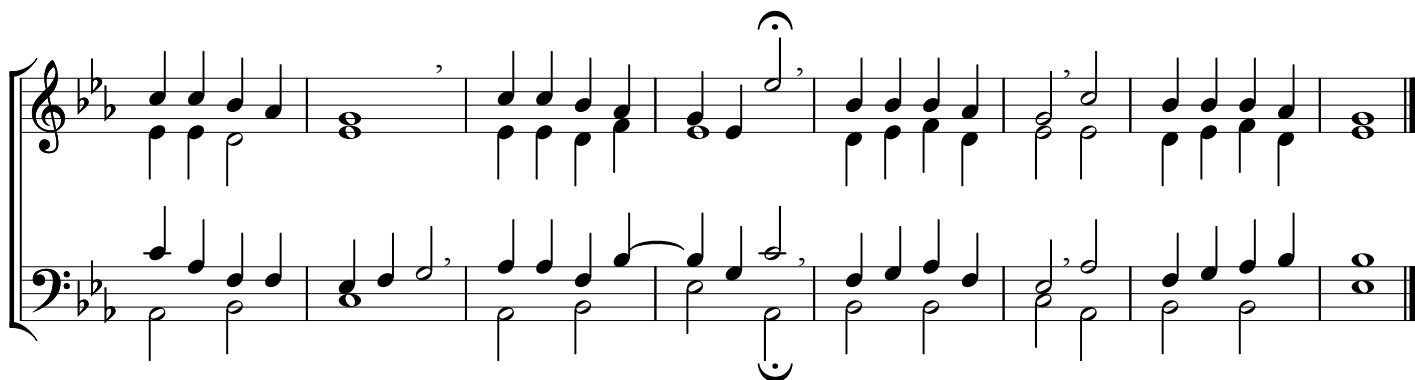
1.



# Leucht, Laterne, leuchte

Satz: Georg Schroeder

2.



# Laterne

Satz: Wilfried Rittau

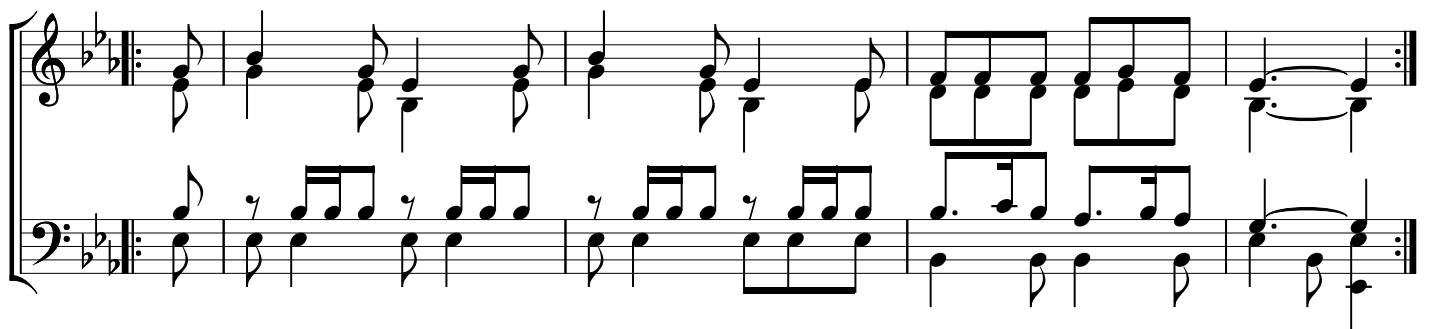
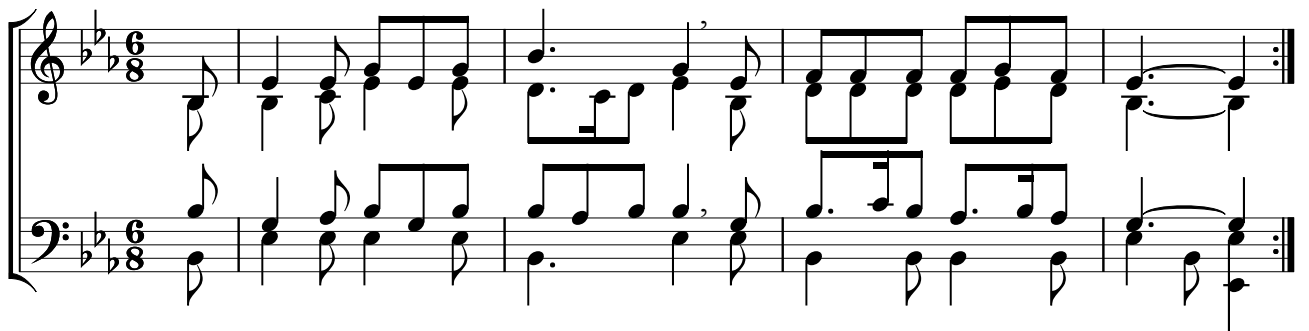
3.



## Ich geh mit meiner Laterne

Satz: Wilfried Rittau

4 .



## Durch die Straßen auf und nieder

Satz: Wilfried Rittau

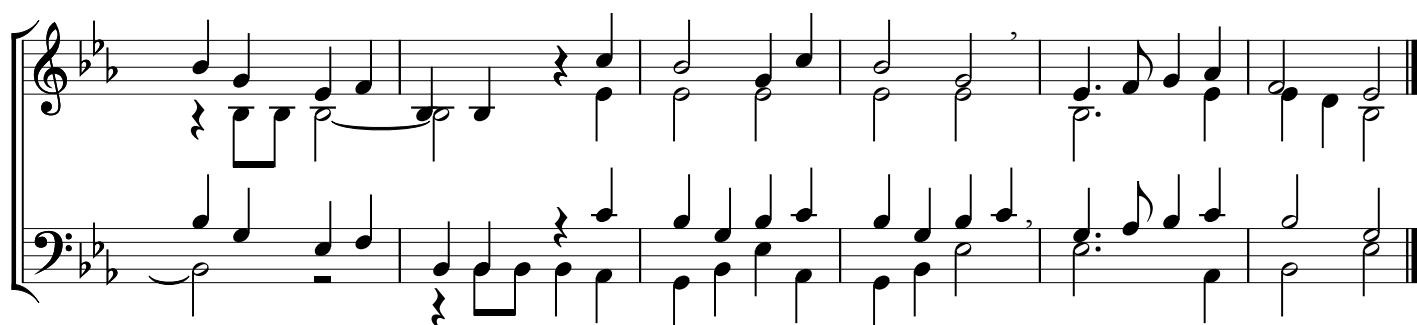
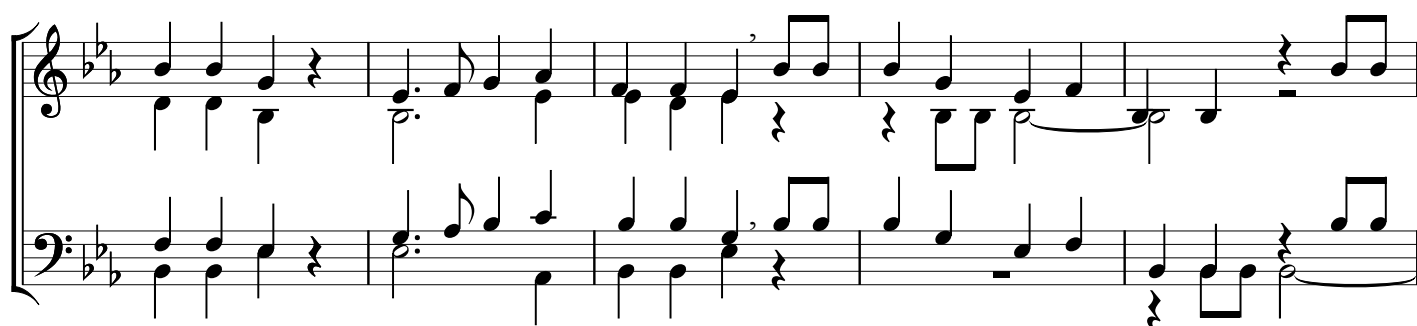
5.



## Abends, wenn es dunkel wird

Satz: Georg Schroeder

6.



# Licht in der Laterne

Satz: Wilfried Rittau

7.

Musical score for 'Licht in der Laterne' (Part 7). The score is in G major (one sharp) and 4/4 time. It consists of two staves. The melody is in the treble clef, and the bass line is in the bass clef. The melody starts on G4, moves to A4, B4, C5, D5, E5, F#5, G5, and then descends. The bass line starts on G3, moves to A3, B3, C4, D4, E4, F#4, G4, and then descends. The piece ends with a double bar line.

Continuation of the musical score for 'Licht in der Laterne' (Part 7). The score continues from the previous block. The melody in the treble clef continues with a series of eighth and sixteenth notes, ending with a double bar line. The bass line continues with a series of eighth and sixteenth notes, ending with a double bar line.

# Ich hab eine feine Laterne

Satz: Wilfried Rittau

8.

Musical score for 'Ich hab eine feine Laterne' (Part 8). The score is in G major (one sharp) and 4/4 time. It consists of two staves. The melody is in the treble clef, and the bass line is in the bass clef. The melody starts on G4, moves to A4, B4, C5, D5, E5, F#5, G5, and then descends. The bass line starts on G3, moves to A3, B3, C4, D4, E4, F#4, G4, and then descends. The piece ends with a double bar line.

Continuation of the musical score for 'Ich hab eine feine Laterne' (Part 8). The score continues from the previous block. The melody in the treble clef continues with a series of eighth and sixteenth notes, ending with a double bar line. The bass line continues with a series of eighth and sixteenth notes, ending with a double bar line.